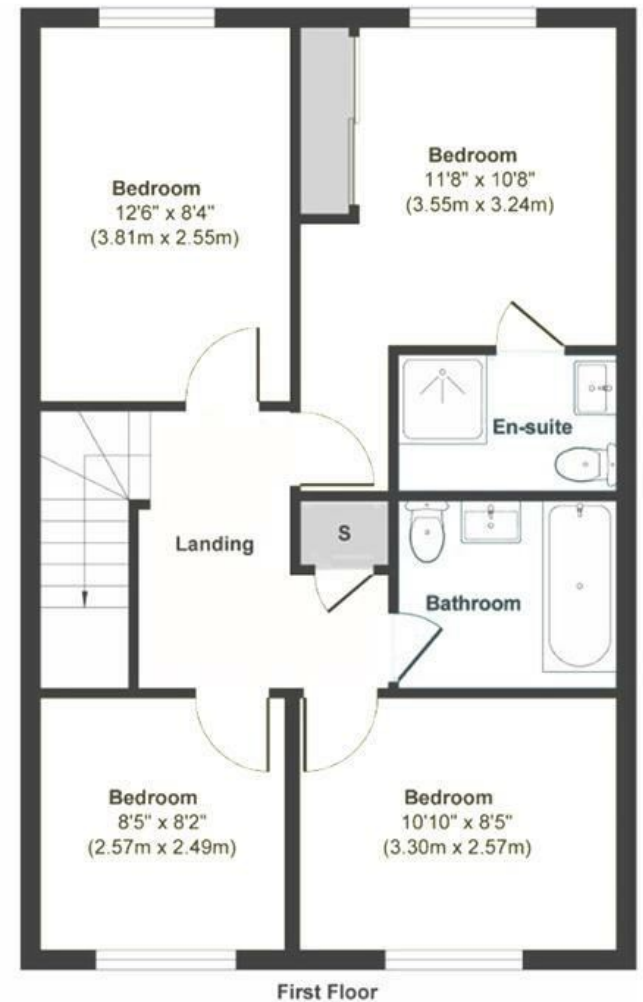
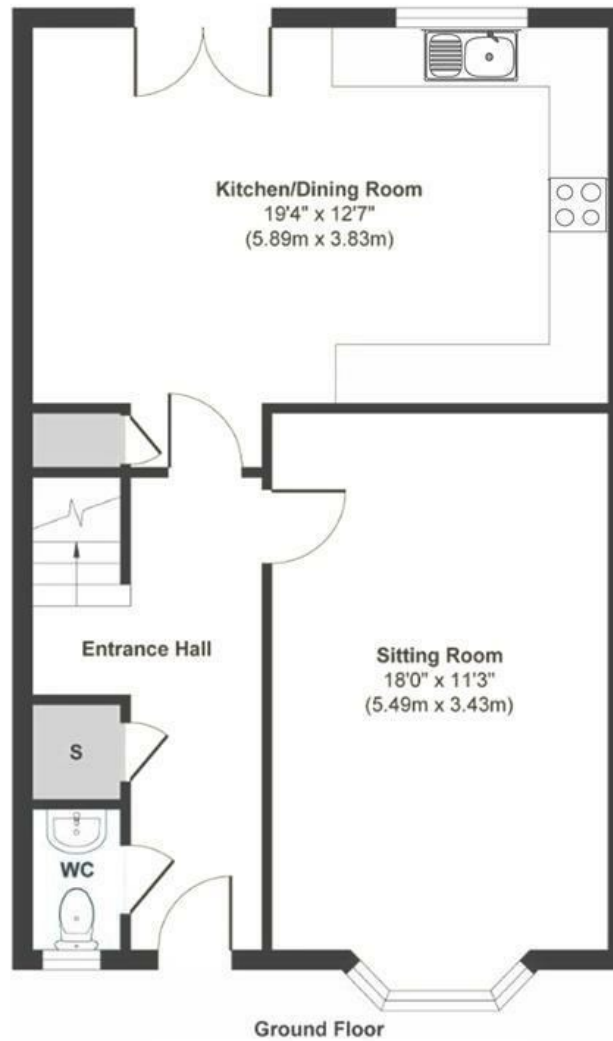


Thornfield Road

BRENTY

APPROXIMATE FLOOR AREA
112 SQM / 1196 SQFT



Boardwalk

Thornfield Road

BRENTY, BRISTOL



£500,000



4 Bedrooms



BS10 6FB



2 Bathrooms

"We live in a lovely, safe neighbourhood, very close to parks, Westbury on Trym village and Cribbs Causeway. It is a short drive to airport and city centre. We are particularly fond of our brilliant countryside view from the kitchen/diner."

